



# Manure Augie

M  
A  
N  
U  
R  
E  
  
A  
U  
G  
E  
R

**DESIGNED TO  
MOVE LIQUID  
MANURE  
SWIFTLY AND  
STEADILY**

*SILO-MATIC'S MANURE AUGIE* was designed to replace the "old chute" of gutter type barn cleaners. When used with a holding pit, your workload can be reduced by hauling manure only as the pit requires unloading.

Manure can become sloppy in the old barn cleaner chute when loading the spreader, causing "manure rollback." *SILO-MATIC'S* big 12 inch diameter "Augie" eliminates this problem by moving the wet manure rapidly into the spreader.

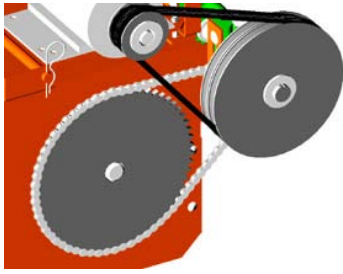


The auger turns in a flange bearing at the drive end and uses an ultra-high density polyester bearing at the lower end, with no hanger bearing in between to obstruct flow. Since the lower bearing is UHMW plastic, we do not recommend sand to be used as bedding material because of its abrasiveness. The drive unit features a heavy-duty Belt-Chain jackshaft drive with #50 Roller chain. A 5-10 hp motor is all that is required to handle your heaviest manure loading needs.

The MANURE AUGIE comes in five standard sizes:

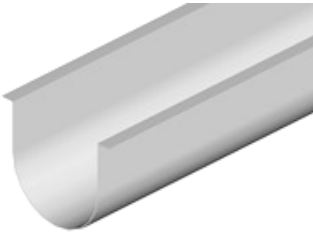
16 foot, 18 foot, 20 foot, 22 foot and 24 foot lengths.

The 12 inch auger has a 3-3/4" diameter tube with 1/4" flighting in a heavy duty 10 gauge galvanized or stainless steel 13" U-trough with 14 gauge galvanized covers.



**▪ BELT/ CHAIN JACKSHAFT REDUCTION DRIVE**

Uses a double V-belt and #50 chain jackshaft reduction drive. Designed and engineered with low rpm for smooth, quiet operation and less vibration.



**▪ 10 GAUGE TROUGH**

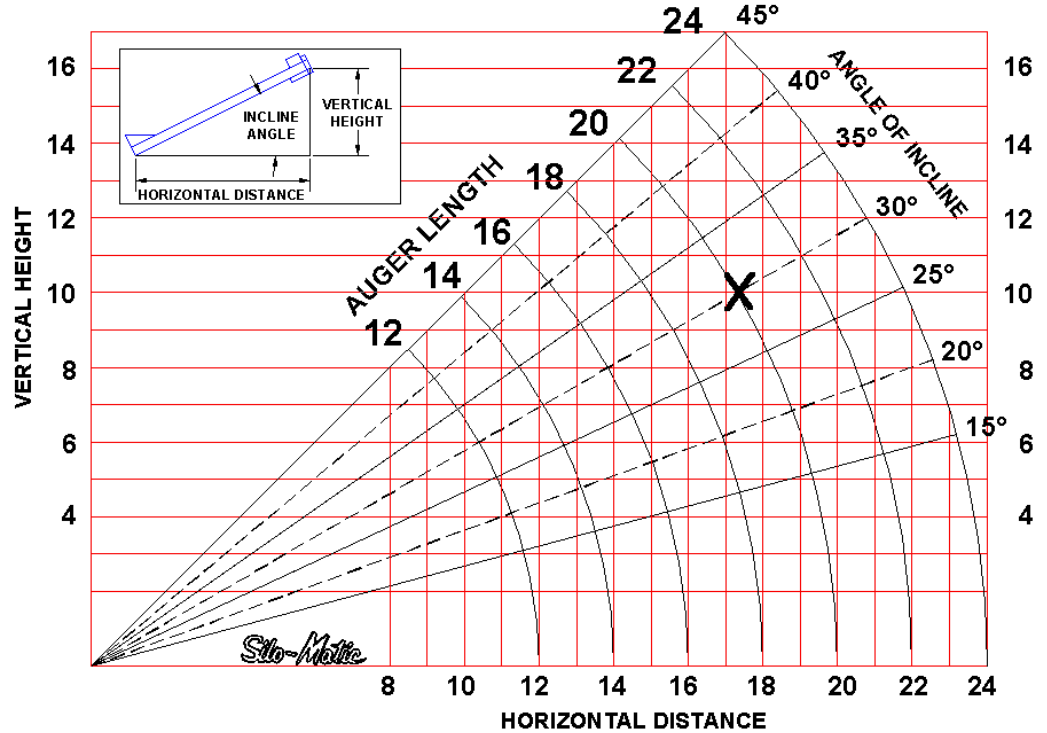
Your choice of 304 Stainless Steel or Galvanized Trough is available. An optional UHMW Poly liner is available.



**▪ OPTIONAL HOPPER**

24" Hoppers are available as an option if your operation would require it.

# MANURE AUGIE INCLINE AND LENGTH CHART



EXAMPLE: The "X" on the graph shows that at an incline angle of 30 degrees (suitable for liquid manure) a manure auger 20 feet long will clear a vertical height of 10 feet and will extend a horizontal distance of slightly more than 17 feet.

For satisfactory performance the angle of incline should be limited to the following maximum values:

- Semi-Solid manure (87% moisture or less) - 40 degrees
- Liquid Manure (92% moisture or greater) - 30 degrees

SPECIFICATIONS	
AUGER DIAMETER	12"
AUGER FLIGHTING THICKNESS	1/4"
AUGER OPERATING RPM	158 STANDARD, 137 OR 179 OPTIONAL
TROUGH THICKNESS	10 Gauge
MAXIMUM LENGTH	24'
MOTOR REQUIREMENTS	
For 16'	5 HP
For 18' through 22'	7-1/2 HP
For 24'	10 HP

Silo-Matic and Valesco Manufacturing, Inc. reserve the right to change features and specifications due to research and development being applied at the time of this printing. Photos may show doors, guards and shields open or removed for illustration purposes only. Be sure that all doors, guards and shields are in their proper operating positions before starting equipment.

Your Authorized Silo-Matic Dealer:

**Still Built to Handle the Daily Grind.**



Valesco Mfg. Inc.  
7857 N 1100 E  
Loogootee, In

(812) 636-6001  
[www.silo-matic.com](http://www.silo-matic.com)